

E.8. EFFECT ON OPTIMAL REINSERTION 1 & 2 $k=20$ OF INCREASING THE NUMBER OF VARIABLES.

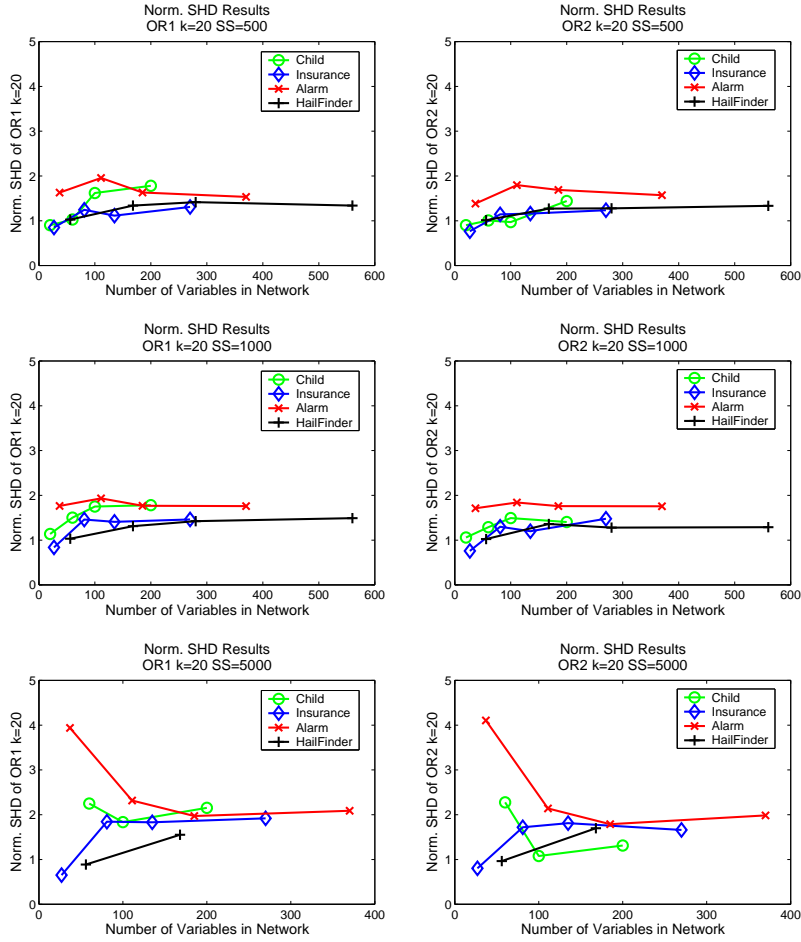


Figure 38. Normalized SHD vs. number of variables in the network for the Optimal Reinsertion 1 & 2 algorithm with $k = 20$ on the CHILD, INSURANCE, ALARM, HAILFINDER tiled networks.