

E.6. EFFECT ON OPTIMAL REINSERTION 1 & 2  $k=5$  OF INCREASING THE NUMBER OF VARIABLES.

Recall that the timing results for Optimal Reinsertion are based upon that of *MMHC* therefore we have excluded the plots of the Normalized Time here for Optimal Reinsertion.

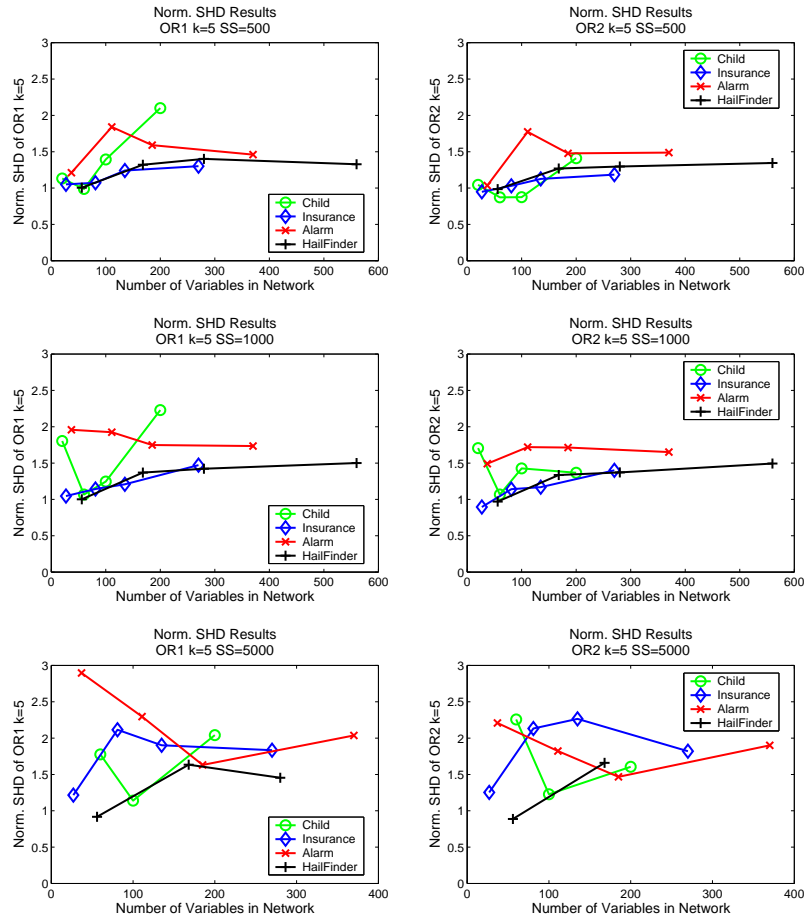


Figure 36. Normalized *SHD* vs. number of variables in the network for the Optimal Reinsertion 1 & 2 algorithm with  $k = 5$  on the CHILD, INSURANCE, ALARM, HAILFINDER tiled networks.